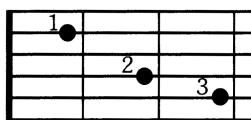
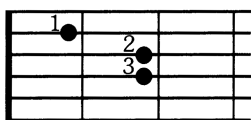


# Akkordübersicht

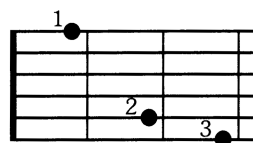
C-Dur



A-Moll



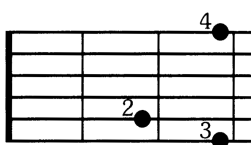
G-7



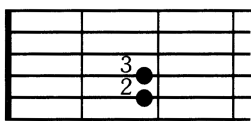
F



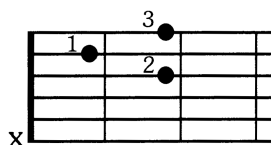
G-Dur



E-Moll



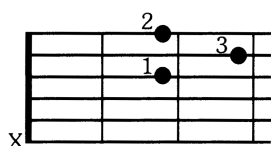
D-7



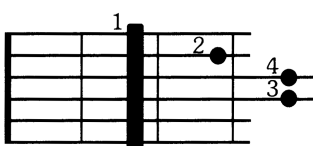
C



D-Dur



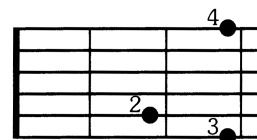
H-Moll



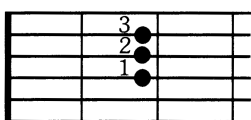
A-7



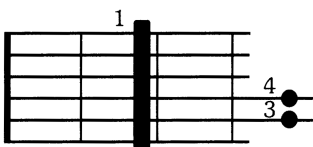
G



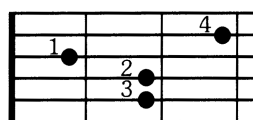
A-Dur



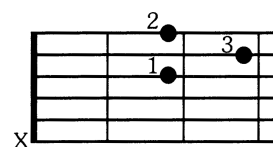
Fis-Moll



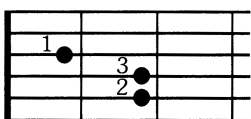
E-7



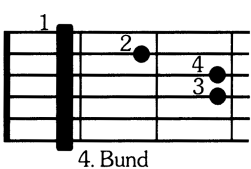
D



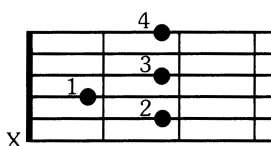
E-Dur



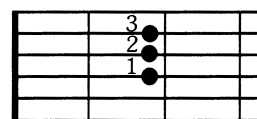
Cis-Moll



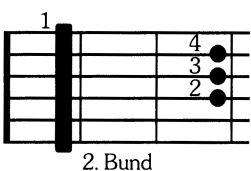
H-7



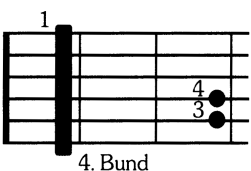
A



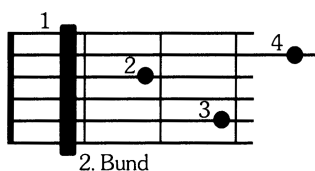
H-Dur



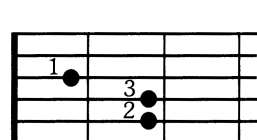
Gis-Moll



Fis-7



E



X = nicht anschlagen